

# 80 YEARS

InSinkErator® is celebrating its 80<sup>TH</sup> anniversary and 80 million tons of food waste kept out of landfills\*.

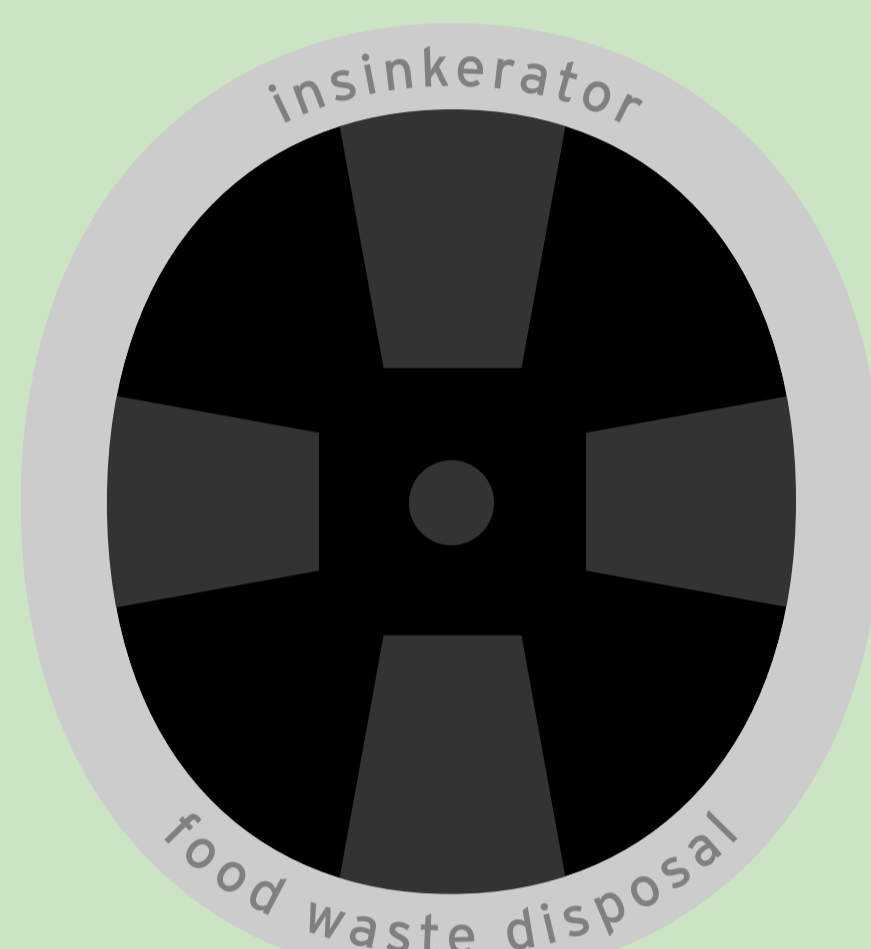
Food waste in landfills produces methane, a gas with a global warming potential

METHANE  
CH<sub>4</sub>

METHANE  
CH<sub>4</sub>

# 21x

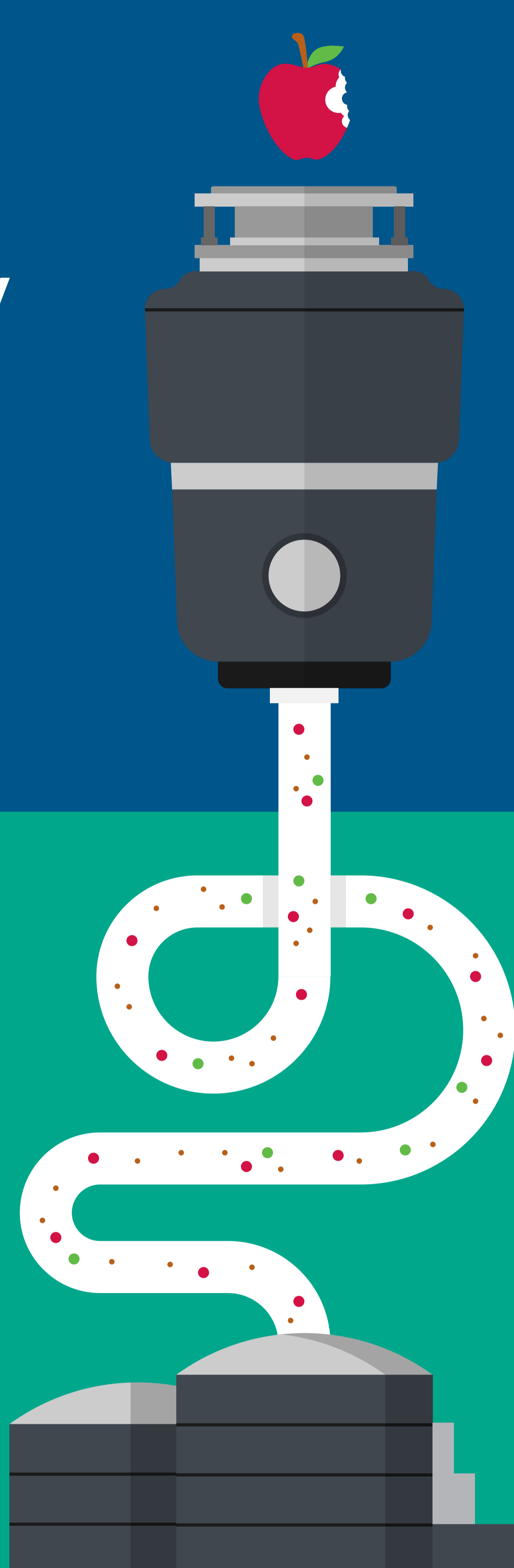
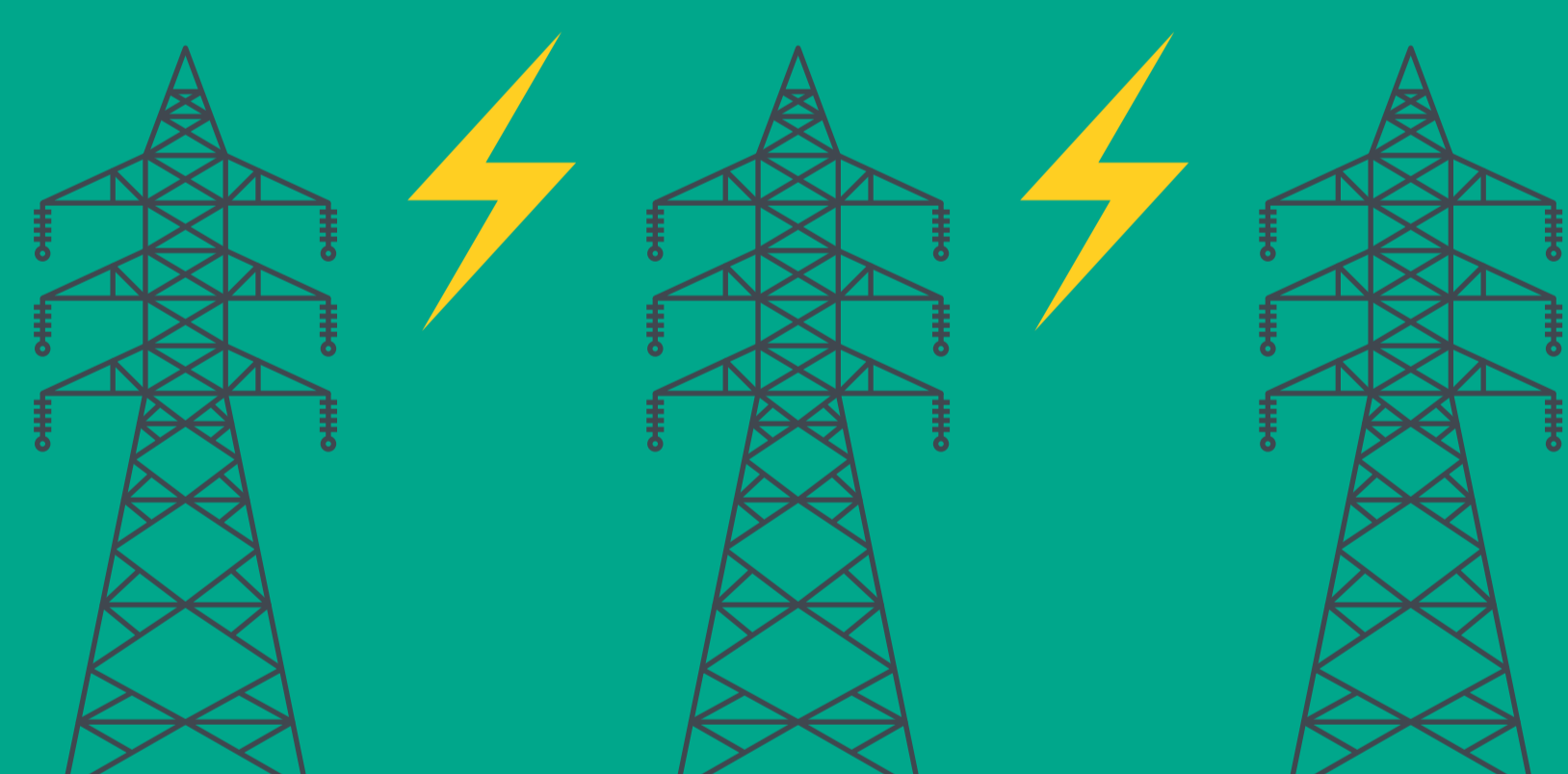
GREATER THAN  
CARBON DIOXIDE



Did you know garbage disposals are an environmentally responsible option for keeping food waste out of landfills?

InSinkErator® garbage disposals grind tough food scraps into a slurry that flows through plumbing to wastewater treatment facilities equipped to handle the liquid and fine particles.

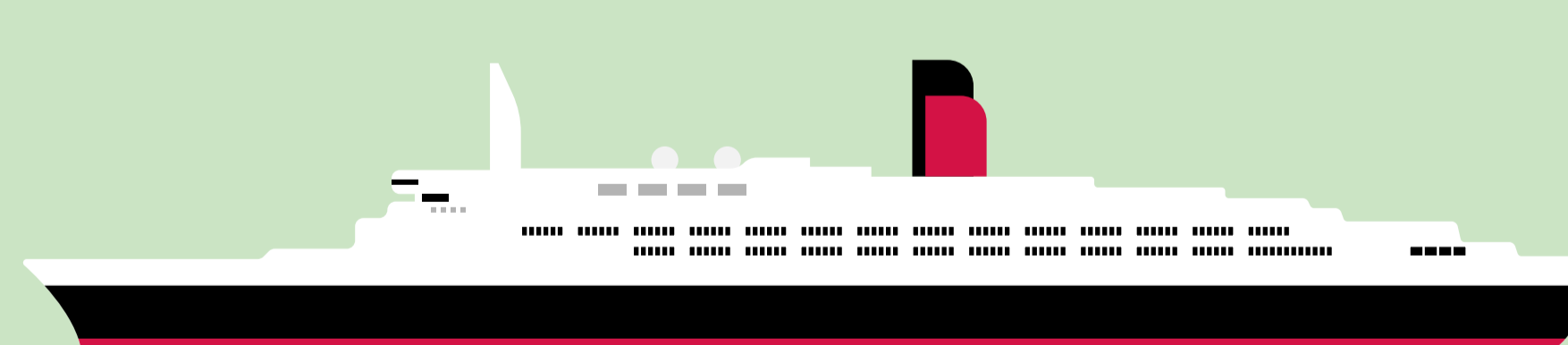
At capable facilities, food waste can be recycled as renewable energy and fertilizer.



The amount of food waste we have diverted from landfills is roughly equivalent to the weight of

# 1,000

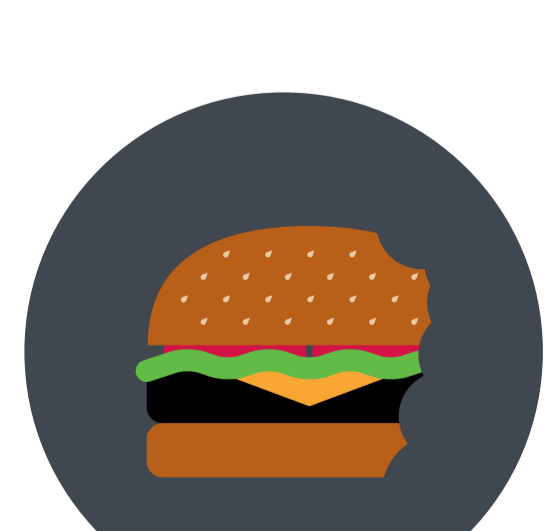
OCEAN LINERS



## WHAT CAN I PUT DOWN THE FOOD WASTE DISPOSAL?



OLD FOOD IN THE FRIDGE



UNEATEN FAST FOOD



VEGGIES/ PEELS



SMALL BONES



LEFTOVERS



ANY NON-FOOD ITEMS



GREASE



OIL

inSinkErator®

\*Data is provided for general informational and illustrative purposes. The environmental impact of disposers can vary based on use, location, and local wastewater treatment facility capabilities. For specific information, contact a qualified waste professional.