



CONTROL CENTER MODEL CC-202

AUTOMATIC REVERSING ACTION • DOUBLES THE LIFE OF DISPOSER GRINDING ELEMENTS

SPECIFICATIONS

STAINLESS STEEL ENCLOSURE

- NEMA 4
- Waterproof construction
- 18 gallon (68.1 liters) stainless steel
- Easy to clean and keep clean

AUTOMATIC REVERSING CONTROL

- Reverses direction of motor at each startup
- Increases cutting element life and reduces jams

REVERSING DELAY

- Disposer will not reverse while motor is in motion
- Protects motor from burn out from operator misuse

AUTOMATIC DROP OUT SYSTEM

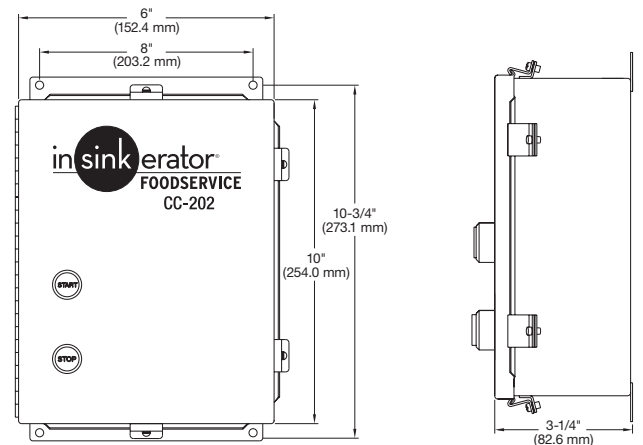
- If a power loss occurs, control will automatically disengage power lines
- Disposer must be restarted



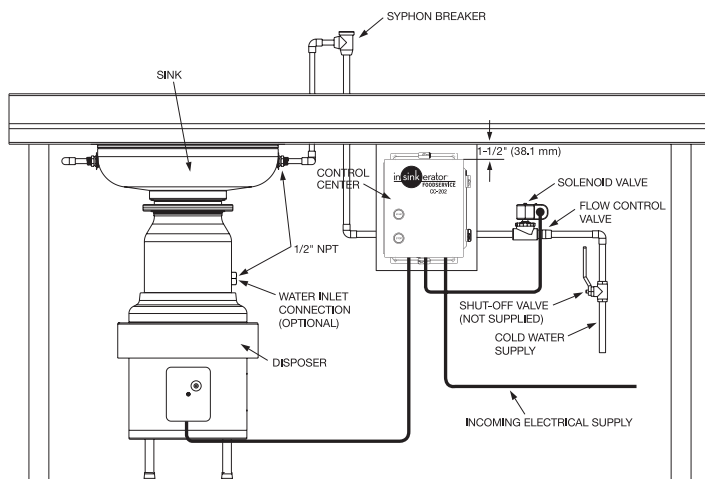
VOLTAGE/PHASE AVAILABILITY

Model	Voltage/Hz	Phase	Disposer Models
CC202D-1	120V, 50/60 Hz	1 Ph	SS-50 to SS-200
CC202D-2	208-240V, 50/60 Hz	1 Ph	SS-50 to SS-200
CC202D-3	208-240V, 50/60 Hz	3 Ph	SS-50 to SS-1000
CC202D-4	380-460V, 50/60 Hz	3 Ph	SS-50 to SS-1000

DIMENSIONS



RECOMMENDED INSTALLATION



NOTE: The CC-202 control center should be mounted 1-1/2" (38.1 mm) back from the front surface of the table.

Our products appear on **The KCL CADalog** CD-ROM based CAD Foodservice Symbol Library. More information is available from **Kochman Consultants, Ltd.** at www.kclcad.com.



4700 21st STREET
 RACINE, WI 53406
 TEL: 800-845-8345
 FAX: 262 554-3620

www.insinkerator.com



The Emerson logo is a trademark and a service mark of Emerson Electric Co.

